

2014 6700 Tamper Maintenance and Upgrade Recommendations



Nordco has assembled this list of kits and components to help you maintain, repair and upgrade your 6700 Tampers during end-of-year service. This is a just a small sample of Nordco's extensive selection of aftermarket products. Please note, the right item for your application may vary based on your machine. Consult a specialist on the **Nordco Arcola Parts Hotline at 1-855-527-2652**, or visit **www.nordco.com** to search our complete selection of machine parts, kits and exchange components.

MACHINE MAINTENANCE, REPAIR & UPGRADE KITS

Jackson or HTT 6700

JACKBEAM

J2000825 **Complete re-manufactured non-Jupiter 4 inch Jackbeam**
Exchange or Purchase Outright

J2012753 **Complete Extended 4 inch Jackbeam, New Construction**
Allows an extra 2½ inches of hook extension.

J2005527 **Complete re-manufactured Jupiter 4 inch Jackbeam**
Exchange or Purchase Outright

J2000784-Kit **Hook Insert Kit**
J2000784 Rail Hook Assembly (2 each)
J117161-1 Insulating Strip (2 each)
J223213-1 Hook Insert Screw 4" (4 each)
J2000477 Insulating Washer (4 each)
Hardened Washer (4 each)



■ Repair/maintain machine
■ Improve machine productivity



WORKHEADS

J20000735 **Re-manufactured set of four Jackson 6700 Workheads**
Painted and ready to bolt on, includes new vibrator motors.

JS100506 **Complete Workhead Pin Kit**
All the pins and shafts to rebuild one workhead
J240373-2 Shaft Kit, Workhead Pivot (2 each)
J240373-3 Workhead Pivot Pin (2 each)
J216795-4 Teardrop Pin 6.37" (1 each)
J216795-1 Teardrop Pin 4.56" (1 each)
J216799-2 Teardrop Pin 6.43" (1 each)
J114607-1 6700 Workhead Lock Pin (1 each)



JS100505 **Workhead Rubber Replacement Kit**
All the Rubber pieces required to rebuild one workhead.
J250434-1 Sandwich Mount (8 each)
J116735-1 Square Center Bonded Joint (6 each)
J152199-1 6700 Workhead Guide Rod Rubber (2 each)
J2002853 Workhead Cushion (2 each)
J113169-1 Snubber (6 each)

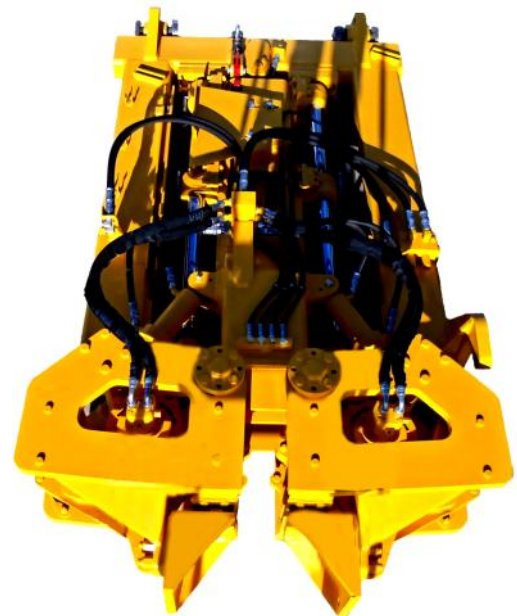


J171494-1 **Vibrator Motor Repair Kit**
Bearings, Shields and Couplers for one Vibrator Assembly

J251414-1 **6700 Vibrator Motor Complete**
Bolts
Coupler w/hardware
Hydraulic fittings



Above: Nordco Extended Jackbeam. Nordco manufactured jackbeams are constructed using heavier plate for longer service life. Available in Jupiter or non-Jupiter configuration. Below is a complete ready to install 6700 workhead assembly.



2014 Mk IV Tamper Maintenance and Upgrade Recommendations (Mk III too!)



Nordco has assembled this list of kits and components to help you maintain, repair and upgrade your Mk IV Tampers during end-of-year service. This is a just a small sample of Nordco's extensive selection of aftermarket products. Please note, the right item for your application may vary based on your machine. Consult a specialist on the **Nordco Arcola Parts Hotline at 1-855-527-2652**, or visit **www.nordco.com** to search our complete selection of machine parts, kits and exchange components.

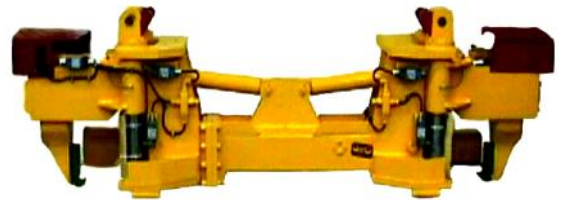
MACHINE MAINTENANCE, REPAIR & UPGRADE KITS

HTT Mk IV or Mk III

COMBO CLAMP ASSEMBLIES

- JA7608VAA-R **Complete re-manufactured Mk III Combo Clamp Assembly**, Exchange or Purchase Outright.
- JA7608VAK-R **Complete re-manufactured Mk IV Combo Clamp Assembly**, Exchange or Purchase Outright.
- JB5708XAA **Mk III or Mk IV Hook Extend Cylinder**

- Repair/maintain machine
- Improve machine productivity



VIBRATOR ASSEMBLIES

- JC0607VAAEX **Re-manufactured Mk IV Hydraulic Vibrator w/Motor and Coupler**. Sold exchange ready to bolt on, includes easy access screen and lifting eyes.

Above: Nordco Mk IV Combo Clamp Assembly with tungsten carbide wear surfaces. Available in Jupiter or non-Jupiter configuration. Below is a complete ready to install Hydraulic Vibrator Assembly complete with Motor and Coupler.

WORKHEAD ASSEMBLY PARTS

- JB5761XAA **Mk IV Workhead Lift Cylinder**
Includes all of the following;
JB5428YAA Seal Kit (1 each)
J0-2100760-1-03 Cylinder Body Assembly (1 each)
J0-2025574-0-02 Cylinder Rod (1)
JB5457X01 Piston (1 each)
JX769790-001 Lift Cylinder Gland (1 each)



- JC6577PAA **Mk IV Workhead Rear Slider Assembly**

Includes
JC0692X01 Slide Pad Workhead Support (1 each)
JC0693X01 Shim Support Block (4 each)
JC0694XAA Support Block Assembly (2 each)
All New Bolts



ELECTRICAL PARTS

- JL420656 Silicone Photocell
- J0-3150005-0-01 Inclinometer
- JL422797EX Mk I - Mk III Voltage Regulator (Rebuilt)



Rebuilding your machine but don't know what all the needed parts are? Call us, we'll help you put a bill of materials together. We've got the parts, just call. Ask for a parts book when you call!