



Product Support Bulletin 2005-013

245 W. Forest Hill Avenue
Oak Creek, WI 53154

Contact: Gary D. Van Deluyster, Service Manager – Phone: 800-445-9258 – Fax: 414-766-2379

Maintenance of Way ~ Work Equipment Bulletin

DATE: December 1, 2005

SUBJECT: Hammer Lifting Eye Kits – 98410212 and 98410215

RATING:

<input type="checkbox"/> DIRECTIVE (Action is required)	<input type="checkbox"/> ALERT (Potential Problem)
<input checked="" type="checkbox"/> INFORMATION (Action is optional)	<input type="checkbox"/> PRODUCT IMPROVEMENT (Enhance Product)

MACHINE MODEL(S): Spiking Machine Model C
Spiking Machine Model 99C
CX Hammer
Spiking Machine Model SS-B

SERIAL NUMBER(S): Model C: 410073-410133
Model 99C: 410200-410424
CX Hammer: 410500 and higher (except CSX machines s/n 410651 and higher and BNSF machines s/n 410657 and higher)
SS-B: 390200 and above

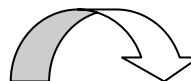
SUMMARY: Lifting eyes have been designed to aid in removing and installing the Kent spiking hammers.

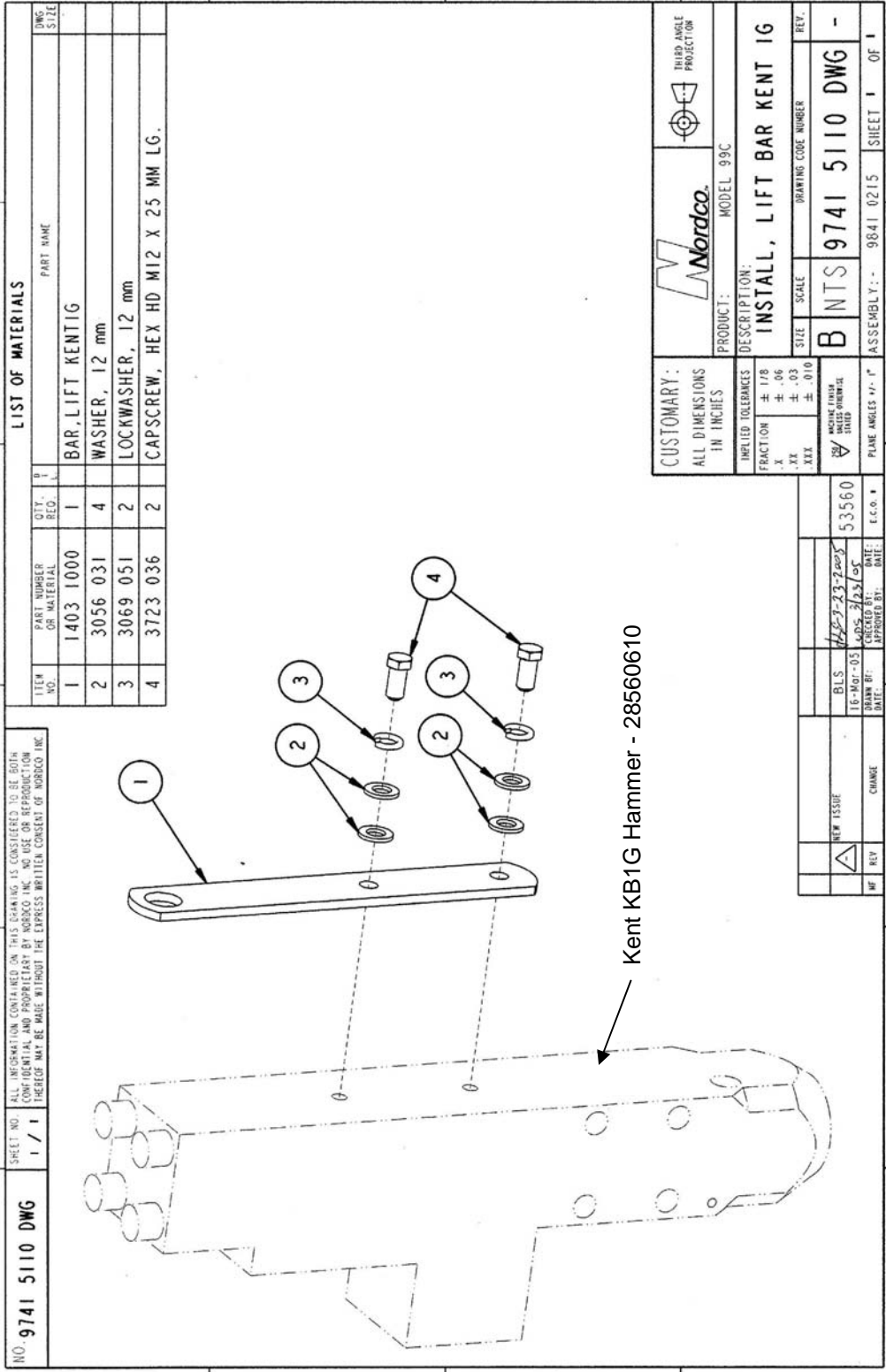
OPERATIONAL IMPACT: Installing these kits will make changing the spiking hammers faster and easier.

ACTION: There are 2 different hammer models used depending on the machine: Model C and 99C machines s/n 410073-410424 use Kent Model KHB1G hammers and CX Hammers s/n 410500 and above, and Model SS-B use Kent Model KF3 hammers. There is a separate part number for each model hammer. Kit **98410212 is used on CX Hammers and Model SS-B Spiking Machines** and kit **98410215 is used on Model C and 99C Spiking Machines**. Please order the correct kit for your machine.

Kits include the lifting eye, hardware and instructions and are easily installed using common tools. **One kit is required per hammer.** See Figures 1 and 2 for individual parts included in the kits.

WARRANTY: None





NORDCO Product Support Bulletin 2005-013

		 THIRD ANGLE PROJECTION	SIZE A	SCALE 1/4	DRAWING CODE NUMBER 9741 5111 DWG	REV. -
IMPLIED TOLERANCES		CUSTOMARY: ALL DIMENSIONS IN INCHES		DESCRIPTION KIT, INSTALL HAMMER LIFT EYE		
FRACTION	± 1/8	PLANE ANGLES ± 1°	MACHINE FINISH UNLESS OTHERWISE STATED		PRODUCT MODEL CX	
.X	± .06					
.XX	± .03					
.XXX	± .010					
ITEM NO.	PART NO.	DESCRIPTION			UNITS PER ASSY	
1	3069 437	WASHER, LOCK HI-COLLAR M16			2	
2	8603 8990	WASHER, FLAT M16 HIGH STRENGTH			4	
3	3192 0262	LIFTING EYE, HAMMER			1	
4	3767 080	CPSCR, SHCS M16 x 80 - 12.9			2	
<ol style="list-style-type: none"> 1. LOOSEN ALL (4) M16 CAPSCREWS OVER TOP HEAD. 2. REMOVE TWO OF THE CAPSCREWS ENTIRELY AND REPLACE WITH ITEMS 1,2,3, & 4 AS SHOWN. 3. RE-TIGHTEN ALL FOUR CAPSCREWS SEQUENTIALLY TO 180 FT.LB. 						
MI6 CAPSCREW						
Kent KF3 Hammer - 28560624						
Accumulator needle valve						
		NEW ISSUE		DCN	<i>1224-6-2005</i>	53560
				30-Mar-05	<i>WJ 4/8/05</i>	
ASSEMBLY: 9841 0212		MF	REV	CHANGE	DRAWN BY: DATE:	CHECKED BY: DATE:
NO. 9741 5111 DWG		SHEET NO. 1 / 1		ALL INFORMATION CONTAINED ON THIS DRAWING IS CONSIDERED TO BE BOTH CONFIDENTIAL AND PROPRIETARY BY NORDCO INC. NO USE OR REPRODUCTION THEREOF MAY BE MADE WITHOUT THE EXPRESS WRITTEN CONSENT OF NORDCO INC.		

Figure 2
KF3 Lifting Eye Kit - 98410212
 (CX Hammer and Model SS-B Spiking Machines)