



# Product Support Bulletin 2010-013

245 W. Forest Hill Avenue  
Oak Creek, WI 53154

Contact: Gary D. Van Deluyster, Service Manager – Phone: 800-445-9258 – Fax: 414-766-2260

## Maintenance of Way ~ Work Equipment Bulletin

**DATE:** October 8, 2010

**SUBJECT:** Inspect for Possible Main Frame Cracks

**RATING:**  **DIRECTIVE**  
(Action is required)

**ALERT**  
(Potential Problem)

**INFORMATION**  
(Action is optional)

**PRODUCT IMPROVEMENT**  
(Enhance Product)

**MACHINE MODEL(S):** TRIPP – Tie Exchanger

**SERIAL NUMBER(S):** 760125-760382

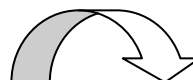
**SUMMARY:** Cracks in the Main Frame of the TRIPP Tie Exchanger have been discovered. The cracks originate in the weld beads connecting the top and side plates of the main frame in the area of the hydraulic tank mounting channel. See Figure 1 on Page 2. It has been determined that the cracks are caused by the ending and restarting of the weld beads in an area of high stress.

**OPERATIONAL IMPACT:** The frame cracks discovered have been hairline. If not properly repaired, the cracks can extend through the entire thickness of the side plate.

**ACTION:** **All machines MUST be inspected for cracks in the area shown in Figure 1 on Page 2.** If cracks are discovered, **DO NOT ATTEMPT TO RE-WELD THE CRACK.** Repairs must be done using a recommended process authorized by the Nordco Engineering Department. Contact the Nordco Service Department to arrange for warranty repairs. Only repairs authorized or performed by Nordco will be covered under warranty by Nordco. Please see the WARRANTY section for details.

**WARRANTY:** Any machine with frame cracks as shown in Figure 1 on this page will be repaired under warranty. Contact the Nordco Service Department at 800-445-9258 to arrange for repairs to be made.

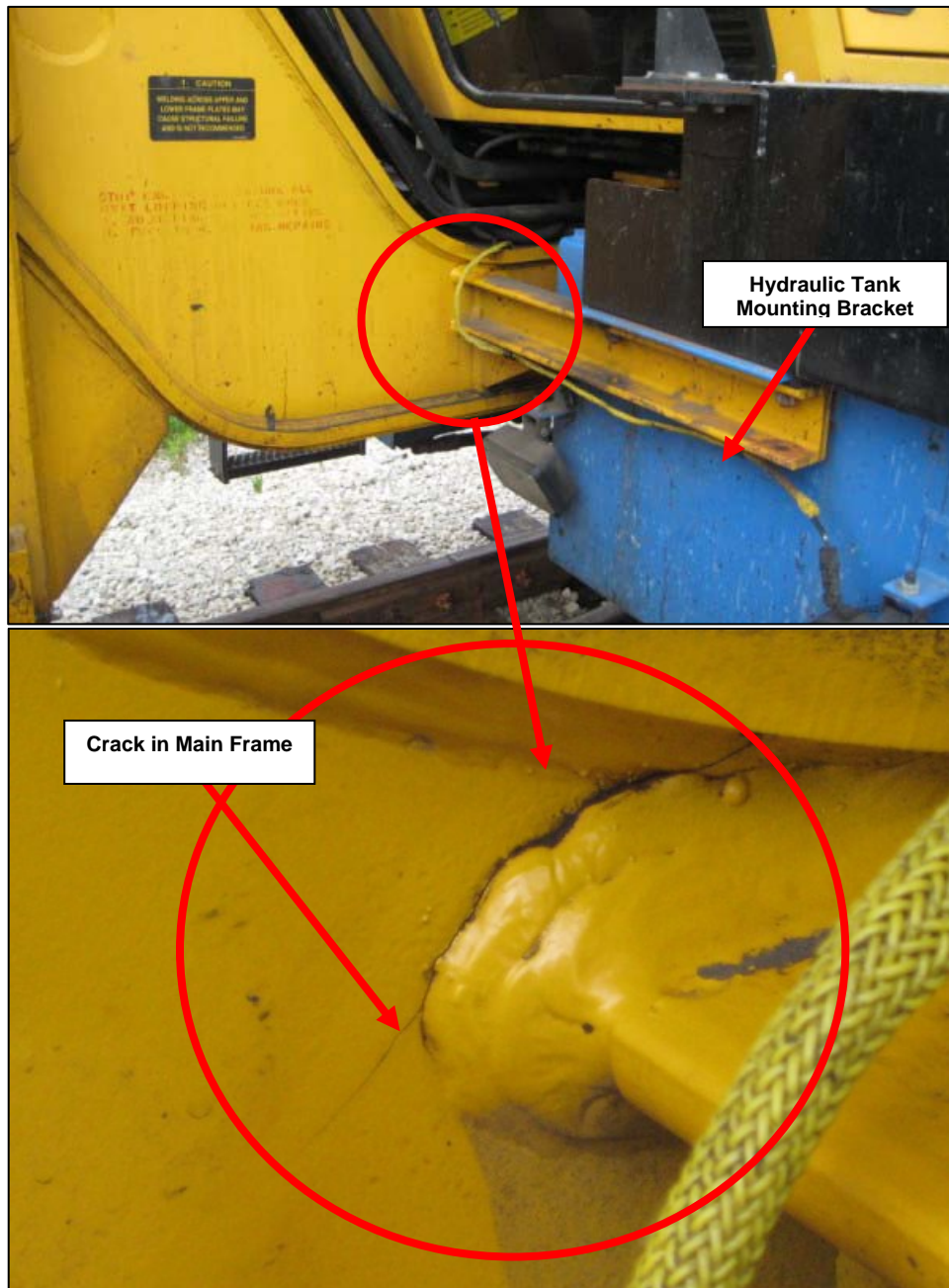
Due to the complicated procedure required to repair the crack, Nordco recommends that the repairs be completed at the Nordco plant in Oak Creek,



## NORDCO Product Support Bulletin 2010-013

Wisconsin. Repairs will be scheduled for a time convenient to minimize machine downtime. Transportation costs will be paid for by Nordco, but it will be the responsibility of the customer to arrange for loading the machine for shipment to Nordco and unloading of the machine after repairs are completed. Repairs should normally be completed within 15 business days after the machine is received in Oak Creek.

Nordco must be contacted prior to December 31, 2011 to make arrangements for warranty repairs. Requests made for warranty repairs made after December 31, 2011 will not be honored. Costs associated with non-Nordco authorized repairs will not be covered under warranty.



**Figure 1**  
Crack in vertical plate of TRIPP Tie Extractor